

## 6. ADJUSTMENT

### 6.1 CD ADJUSTMENT

#### 1) Precautions

- This unit uses a single power supply (+5V) for the regulator. The signal reference potential, therefore, is connected to REFO(approx. 2.5V) instead of GND.

If REFO and GND are connected to each other by mistake during adjustments, not only will it be impossible to measure the potential correctly, but the servo will malfunction and a severe shock will be applied to the pick-up. To avoid this, take special note of the following.

Do not connect the negative probe of the measuring equipment to REFO and GND together. It is especially important not to connect the channel 1 negative probe of the oscilloscope to REFO with the channel 2 negative probe connected to GND.

Since the frame of the measuring instrument is usually at the same potential as the negative probe, change the frame of the measuring instrument to floating status.

If by accident REFO comes in contact with GND, immediately switch the regulator or power OFF.

- Always make sure the regulator is OFF when connecting and disconnecting the various filters and wiring required for measurements.
- Before proceeding to further adjustments and measurements after switching regulator ON, let the player run for about one minute to allow the circuits to stabilize.
- Since the protective systems in the unit's software are rendered inoperative in test mode, be very careful to avoid mechanical and /or electrical shocks to the system when making adjustment.
- Disc detection during loading and eject operations is performed by means of a photo transistor in this unit. Consequently, if the inside of the unit is exposed to a strong light source when the outer casing is removed for repairs or adjustment, the following malfunctions may occur.
  - \*During PLAY, even if the eject button is pressed, the disc will not be ejected and the unit will remain in the PLAY mode.
  - \*The unit will not load a disc.

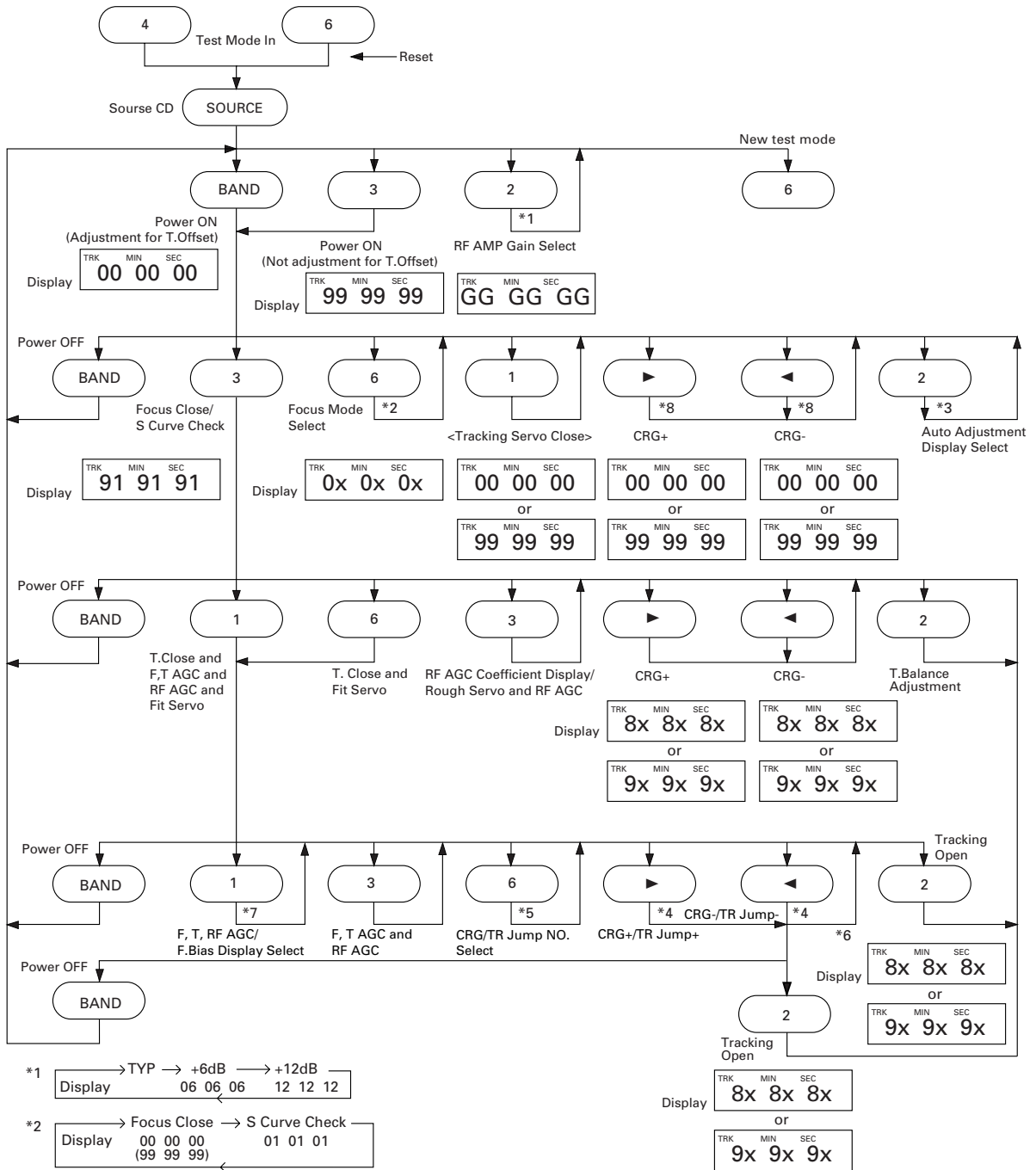
When the unit malfunctions this way, either re-position the light source, move the unit or cover the photo transistor.

#### 2) Test Mode

This mode is used for adjusting the CD mechanism module of the device.

- Test mode starting procedure  
Reset while pressing the **4** and **6** keys together.
- Test mode cancellation  
Switch ACC, back-up OFF.
- After pressing the EJECT key, do not press any other key until the disk is completely ejected.
- If the ► or ◀ key is pressed while focus search is in progress, immediately turn the power off (otherwise the actuator may be damaged due to adhesion of the lenses).
- Jump operation of TRs other than 100TR continues after releasing the key. CRG move and 100TR jump operations are brought into the "Tracking close" status when the key is released.
- Powering Off/On resets the jump mode to "Single TR (91)", the RF AMP gain setting to 0 dB, and the automatic adjustment value to the initial value.

● Flow Chart



- \*1  $\rightarrow$  TYP  $\rightarrow$  +6dB  $\rightarrow$  +12dB  
 Display 06 06 06 12 12 12
- \*2  $\rightarrow$  Focus Close  $\rightarrow$  S Curve Check  
 Display 00 00 00 01 01 01  
 (99 99 99)
- \*3  $\rightarrow$  F.Offset Display  $\rightarrow$  RF.Offset Display  $\rightarrow$  F.Cansel Display  

$$[ \text{F.Cansel Value} = \{ \text{Top Rank 8bit of Set Value (7F [H] to 80 [H])} + 128 \} / 4$$

$$= 63 [D] \text{ to } (32 [D]) \text{ to } 00 [D]$$
- \*4 Single TR/32TR/100TR
- \*5  $\rightarrow$  Single TR  $\rightarrow$  32TRK  $\rightarrow$  100TRK  $\rightarrow$  CRG Move  
 Display 9x(8x):91(81) 92(82) 93(83) 94(84)
- \*6 CRG Move, 100TR Jump Only
- \*7  $\rightarrow$  TRK, MIN, SEC  $\rightarrow$  F.AGC Gain  $\rightarrow$  T.AGC Gain  $\rightarrow$  RF AGC Gain  

$$(F,T.AGC Gain = (\text{Present Value}/\text{Initial Value}) \nabla 20)$$
- \*8 Voltage of CRG Motor = 2 [V]

## 6.2 CHECKING THE GRATING AFTER CHANGING THE PICKUP UNIT

### • Note :

The grating angle of the PU unit cannot be adjusted after the PU unit is changed. The PU unit in the CD mechanism module is adjusted on the production line to match the CD mechanism module and is thus the best adjusted PU unit for the CD mechanism module. Changing the PU unit is thus best considered as a last resort. However, if the PU unit must be changed, the grating should be checked using the procedure below.

### • Purpose :

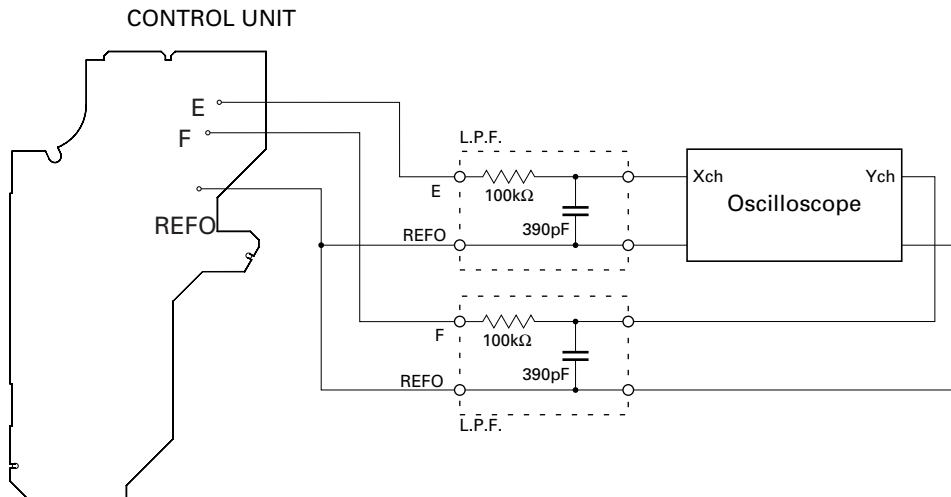
To check that the grating is within an acceptable range when the PU unit is changed.

### • Symptoms of Mal-adjustment :

If the grating is off by a large amount symptoms such as being unable to close tracking, being unable to perform track search operations, or taking a long time for track searching.

### • Method :

- |                       |                            |
|-----------------------|----------------------------|
| • Measuring Equipment | • Oscilloscope, Two L.P.F. |
| • Measuring Points    | • E, F, REFO               |
| • Disc                | • ABEX TCD-784             |
| • Mode                | • TEST MODE                |



### • Checking Procedure

1. In test mode, load the disc and switch the 5V regulator on.
2. Using the ► and ◀ buttons, move the PU unit to the innermost track.
3. Press key 3 to close focus, the display should read "91". Press key 2 to implement the tracking balance adjustment the display should now read "81". Press key 3 2 times. The display will change, returning to "81" on the fourth press.
4. As shown in the diagram above, monitor the LPF outputs using the oscilloscope and check that the phase difference is within 75°. Refer to the photographs supplied to determine the phase angle.
5. If the phase difference is determined to be greater than 75° try changing the PU unit to see if there is any improvement. If, after trying this a number of times, the grating angle does not become less than 75° then the mechanism should be judged to be at fault.

### • Note

Because of eccentricity in the disc and a slight misalignment of the clamping center the grating waveform may be seen to "wobble" ( the phase difference changes as the disc rotates). The angle specified above indicates the average angle.

### • Hint

Reloading the disc changes the clamp position and may decrease the "wobble".

## 7. GENERAL INFORMATION

### 7.1 DIAGNOSIS

#### 7.1.1 TEST MODE

##### ● Error Messages

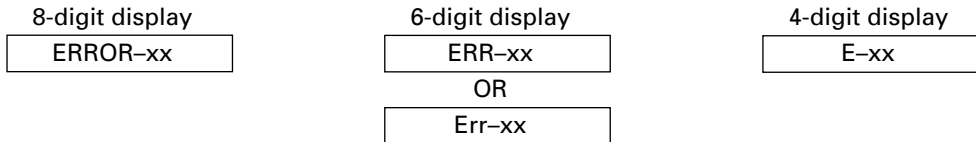
If a CD is not operative or stopped during operation due to an error, the error mode is turned on and cause(s) of the error is indicated with a corresponding number. This arrangement is intended at reducing nonsense calls from the users and also for facilitating trouble analysis and repair work in servicing.

##### (1) Basic Indication Method

1) When SERRORM is selected for the CSMOD (CD mode area for the system), error codes are written to DMIN (minutes display area) and DSEC (seconds display area). The same data is written to DMIN and DSEC. DTNO remains in blank as before.

##### 2) Main unit display examples

Depending on display capability of LCD used, display will vary as shown below. xx contains the error number.



##### (2) Error Code List

Code	Class	Displayed error code	Description of the code and potential cause(s)
10	Electricity	Carriage Home NG	CRG can't be moved to inner diameter. CRG can't be moved from inner diameter. → Failure on home switch or CRG move mechanism.
11	Electricity	Focus Servo NG	Focusing not available. → Stains on rear side of disc or excessive vibrations on REWRITABLE.
12	Electricity	Spindle Lock NG	Spindle not locked. Sub-code is strange (not readable). → Failure on spindle, stains or damages on disc, or excessive vibrations.
		Subcode NG	A disc not containing CD-R data is found. Turned over disc are found, though rarely. → Failure on home switch or CRG move mechanism.
		RF AMP NG	An appropriate RF AMP gain can't be determined. → CD signal error.
17	Electricity	Setup NG	APC protection doesn't work. Focus can be easily lost. → Damages or stains on disc, or excessive vibrations.
30	Electricity	Search Time Out	Failed to reach target address. → CRG tracking error or damages on disc.
A0	System	Power Supply NG	Power (VD) is ground faulted. → Failure on SW transistor or power supply (failure on connector).

Remarks: Mechanical errors are not displayed (because a CD is turned off in these errors).

Unreadable TOC does not constitute an error. An intended operation continues in this case.

A newly designed main unit must conform to the example given above.

Upper digits of an error code are subdivided as shown below:

1x: Setup relevant errors, 3x: Search relevant errors, 3x: Search relevant errors, Ax: Other errors.

## ● New Test Mode

S-CD plays the same way as before.

If an error such as off focus, spindle unlocking, unreadable sub-code, or sound skipping occurs after setup, its cause and time occurred (in absolute time) are displayed.

During setup, operational status of the control software (internal RAM: CPOINT) is displayed.

These displays and functions are prepared for enhancing aging in the servicing and efficiency of trouble analysis.

### (1) Shifting to the New Test Mode

- ① Turn on the current test mode by starting the reset from the key (it varies between the products).
- ② Select S-CD for the source through the specified procedure including use of the [SOURCE] key, and inserting the disc. Then, press the [ 6 ] key while maintaining the regulator turned off.
- ③ After the above operations, the new test mode remains on irrespective of whether the S-CD is turned on or off.  
You can reset the new test mode by turning on the reset start.

\* With some products, the new test mode can be reset through the same operations as that employed for shifting to the STBY mode (while maintaining the Acc turned off).

### (2) Key Correspondence

Key	Test mode		New test mode	
	Power Off	Power On	In-play	Error Production
BAND	To power on (offset adjustment performed)	To power off	–	Time/Err.No. switching
▶	–	FWD-Kick	FF/TR+	–
◀	–	REV-Kick	REV/TR-	–
1	–	T.Close (AGC performed) /parameter display switching	Scan	–
2	RF AMP gain switching	Parameter display switching /T.BAL adjustment/T.Open	Mode	–
3	To power on (offset adjustment not performed)	F.Close/RF AGC/F.T.AGC	–	–
6	–	F.Mode switching /T.Close (no AGC)/Jump switching	Auto/Manu	T.No./Time switching

Note: Eject and CD on/off is performed in the same procedure as that for the normal mode.

### (3) Cause of Error and Error Code

Code	Class	Contents	Description and cause
40	Electricity	Off focus detected.	FOK goes low. → Damages/stains on disc, vibrations or failure on servo.
41	Electricity	Spindle unlocked.	FOK = Low continued for 50 msec. → Damages/stains on disc, vibrations or failure on servo.
42	Electricity	Sub-code unreadable.	Sub-code was unreadable for 50 msec. → Damages/stains on disc, vibrations or failure on servo.
43	Electricity	Sound skipping detected.	Last address memory function was activated. → Damages/stains on disc, vibrations or failure on servo.

Note: Mechanical errors during aging are not displayed.

The error codes should be indicated in the same way as in the normal mode.

(4) Display of Operational Status (CPOINT) during Setup

Status No.	Contents	Protective action
00	CD+5V ON process in progress.	None
01	Servo LSI initialization (1/3) in progress.	None
02	Servo LSI CRAM initialization in progress.	None
03	Servo LSI initialization (2/3) in progress.	None
04	Offset adjustment (1/3) in progress.	None
05	Offset adjustment (2/3) in progress.	None
06	Offset adjustment (3/3) in progress.	None
07	FZD adjustment in progress.	None
08	Servo LSI initialization (3/3) in progress.	None
10	Carriage move to home position started.	None
11	Carriage move to home position started.	None
12	Carriage is moving toward inner diameter.	Specified 10 seconds has been passed or failure on home switch.
13	Carriage is moving toward outer diameter.	Specified 10 seconds has been passed or failure on home switch.
14	Carriage outer kick in progress.	None
15	Carriage outer diameter feed (1 second) in progress.	None
20	Servo close started.	None
21	Pre-processing for focus search started.	None
22	Spindle rotation and focus search started.	None
23	Waiting for focus close (XSI=Low).	Specified focus search time has been passed.
24	Standing by after focus close is over.	Specified focus search time has been passed.
25	Focus search preprocessing is in progress while setup protection is turned on.	None
26	Focus search preprocessing is in progress while focus recovery is turned on.	None
27	Wait time after focus close is set up.	Off focus.
28	Standing by after focus close is over.	Off focus.
29	Setup (1/2) before T balance adjustment is started.	Off focus.
30	Setup (2/2) before T balance adjustment is started.	Off focus.
31	T balance adjustment started.	Off focus.
32	T balance adjustment (1/2).	Off focus.
33	T balance adjustment (2/2).	Off focus.
34	Waiting for spindle rotation to end. Spindle rough servo.	Off focus.
35	Standing by after spindle rough servo is over.	Off focus.
36	RF AGC started.	Off focus.
37	RF AGC started.	Off focus.
38	RF AGC ending process in progress.	Off focus.
39	Tracking close in progress.	Off focus.
40	Standing by after tracking is closed. Carriage closing in progress.	Off focus.
41	Focus/tracking AGC started.	Off focus.
42	Focus AGC started.	Off focus.
43	Focus AGC in progress.	Off focus.
44	Tracking AGC in progress.	Off focus.
45	Standing by after focus/tracking AGC are over.	Off focus.
46	Spindle processes applicable servo.	Off focus.
47	Check for servo close is started.	Off focus.
48	Check of LOCK pin started.	Off focus or spindle not locked.
49	RF AGC started.	Off focus.
50	RF AGC in progress.	Off focus.
51	Standing by after RF AGC is over.	Off focus.

## (5) Display Examples

## 1) During Setup (When status no. = 11)

TRK No.	MIN.	SEC.
11	11'	11"

## 2) During Operation (TOC read, TRK search, Play, FF and REV)

The same as in the normal mode.

## 3) When a Protection Error Occurred

Switch to the following displays (A) and (B) using the [BAND] switch:

(A) Error occurrence timing display in absolute time.

An example: Error occurred in 12th tune at 34'56" in absolute time.

TRK No.	MIN.	SEC.
12	34'	56"

(B) Error No. display

An example: Error #40 (Off focus is detected)

ERROR-40